

WATER ENGINEERS FOR THE AMERICAS & AFRICA

Making connections. Empowering communities. Improving lives.



2024 ANNUAL REPORT



WEFTA

wefta.net

TABLE OF CONTENTS

Message from WEFTA's President	1
Our Mission	2
Where We Work	3
WASH in HCFs	4
Circuit Rider Program	5
Project & Activity Highlights	6
Bolivia	7
El Salvador	11
Honduras	13
Mexico	14
Panama	15
Peru	19
Burkina Faso	20
Cameroon	21
Ghana	22
Ethiopia	23
Kenya	25
Nigeria	27
Tanzania	29
Other Activities	33
Partnership Development	34
Our Commitment	37
Impact Summary	38





Dear Friends of WEFTA,

As we enter 2025, we extend our heartfelt gratitude to our donors, partners, volunteers, and the communities we serve for your collaboration and unwavering support in 2024. Together, we advance our mission to provide clean water and sanitation, enabling healthier lives, education, economic opportunities, and a brighter future for generations to come.

While our supporters, partners, and volunteers are vital to our success, much credit belongs to the communities themselves. Local leaders, churches, schools, and clinics drive the engagement and labor, fostering ownership and reducing costs through the guidance and technical oversight of WEFTA's partners and volunteers. This teamwork often allows us to expand projects beyond their original scope, reaching even more people.

We're especially proud of our circuit rider program built with the help of our partners, ensuring the long-term maintenance and viability of completed systems. By involving local resources, this initiative enhances operability and empowers future generations to sustain and build upon these systems.

Your support, no matter its size, makes a tangible difference. Together, we're improving lives across Latin America and Africa. Explore the details in this year's annual report and know that WEFTA and our partners remain steadfast in our mission as we recognize the importance of transforming lives through sustainable water and sanitation systems.

As we look to 2025, we recognize the challenges that are developing, but we also appreciate the impact we're able to make together. Thank you for being an essential part of this journey, which is becoming more important to those we work and collaborate with, than ever.

Sincerely,

**Peter G. Fant, P.E.
President/Co-founder**



OUR MISSION

Our Mission is to connect water professionals and partners with communities in developing countries to improve water, sanitation, and hygiene resources for the benefit of the people and the environment.

WHERE WE WORK

Bolivia*

Burkina Faso*

Cameroon*

Colombia

El Salvador*

Ethiopia*

Ghana*

Guatemala

Honduras*

Kenya*

Mexico*

Nigeria*

Panama*

Peru

Tanzania*



WASH in HCFs

WEFTA continues to work with our in-country partners, coordinating NGOs, and project stakeholders on the improvement of water, sanitation, and hygiene (WASH) resources for healthcare facilities (HCFs). The World Health Organization and UNICEF estimate that half of healthcare facilities lack basic water services, and two-thirds lack basic sanitation. To address this critical need, WEFTA collaborates with partners to improve WASH resources in healthcare facilities, focusing on adequate water supply and safe sanitation.

In 2024, WEFTA expanded its current WASH in HCFs efforts in Africa:

Ethiopia: Continued collaboration with Village Health Partnership (VHP) to enhance WASH resources at 10 HCFs in the West Omo Zone.

Burkina Faso, Cameroon, Ghana, Nigeria, Tanzania, and Western Ethiopia: Partnered with the Daughters of Charity - International Project Services (DCIPS) to implement WASH improvements in HCFs.

Tanzania: Worked with Sanitation and Water Action (SAWA) to enhance WASH systems and implement the Circuit Rider Program, building local capacity for system operation and maintenance.

These efforts are vital to improving health outcomes and ensuring the longevity of WASH systems in underserved regions. In addition, WEFTA increased its post-construction WASH project follow-up by developing circuit rider programs in conjunction with DCIPS and VHP in our service countries to ensure WASH improvements last for generations to come and the critical HCF staff have the knowledge and skills to operate and maintain the WASH infrastructure.

CIRCUIT RIDER PROGRAM



Since 2012, WEFTA has supported in-country technical specialists, known as Circuit Riders, who provide essential services for water and sanitation projects. Circuit riders are experts in WASH (Water, Sanitation, and Hygiene) with the skills to work directly with communities and systems. By regularly visiting the same communities, they build relationships that enable them to anticipate and address issues effectively.

The services provided by circuit riders include:

- Project feasibility assessments
- On-site project construction management
- Post-construction follow-up and troubleshooting
- Operator, staff, and water committee member training on operation, maintenance, and management of WASH improvements

These services ensure long-term sustainability of the water and sanitation systems.

WEFTA's Circuit Rider Program is entrepreneurial by design, enabling circuit riders to serve multiple systems in a region while earning fees from water and wastewater system committees. WEFTA may provide stipends in cases where financial sustainability is not yet achieved, with the goal of fostering self-sufficiency as circuit riders demonstrate their value to the communities they serve.

In 2024, WEFTA continued its commitment to circuit rider programs with active operations in Mexico, Honduras, Panama, and Bolivia, while strengthening initiatives in Ethiopia, Tanzania, Kenya, Ghana, Nigeria, and Burkina Faso. These programs now encompass a broader scope, including:

- Technical support for WASH systems in healthcare facilities (HCFs), schools, and communities
- Ongoing maintenance, repair, and renovation of WASH infrastructure
- Training of local stakeholders to ensure system functionality and longevity

WEFTA's Circuit Rider Program remains a cornerstone of our approach to sustainable WASH improvements, leveraging local expertise and community involvement for lasting impact.

PROJECT & ACTIVITY HIGHLIGHTS





BOLIVIA

CUIPA KAHUAYA

In March 2024, our Bolivian in-country partners, Suma Jayma, successfully completed the 'Gravity Flow Water Project' in the community of Cuipa Kahuaya, located in the Ingavi Province. This project established a groundwater well and gravity flow water system, featuring 64 household tap stands, along with taps for the local school and government facilities. As a result, the project now serves over 320 people, encompassing 64 families. This project was completed on time and on budget. WEFTA volunteer engineer Jason Gehrig, accompanied by his son, attended the project inauguration during their site visit to Bolivia in March.

GUALLAQUERI

In early July, funding was secured for a 'Wells and Hand Pumps' project in the community of Guallaqueri, located in the Los Andes Province. Suma Jayma successfully completed the construction of 11 wells and hand pumps for 11 Indigenous families, benefiting a total of 55 people in the Guallaqueri community in the municipality of Laja. The project was delivered on time and on budget.

CUIPA LIVIRI and MARKA PANDO

In July, Suma Jayma, with financial support from the Branch Family Fund and the Spirit of Christ Catholic Church, conducted a topographic study and engineering design for a new gravity flow water project in the communities of Cuipa Liviri and Marka Pando, both located in the Province of Pacajes. Similar to the Chachacomani gravity flow water system project in 2023, Suma Jayma conducted the survey and design work, assisting these communities in securing governmental funding for the construction of the new water system.



ARAPATA

In September, Suma Jayma successfully completed a small 'Wells and Hand Pumps' project for 4 families in the Arapata community, located in the Province of Los Andes. Funded by the Denver - University Hills Rotary Club, this project benefited 21 lives and was completed on budget and on time. The Club plans to fund a new project of similar scope in 2025.



SUMA JAYMA NEWS

In early June, the Suma Jayma team fell victim to a robbery. This break-in to their main workshop resulted in the loss of all its contents, including the tools and equipment essential for their operations.

In response, WEFTA team members, Jason Gehrig and Jason Obergfell, lead efforts to raise emergency funds to help Suma Jayma replace the stolen tools and equipment. Private donors contributed to these efforts and Suma Jayma was able to replace much of the essential equipment needed to resume their critical work in Bolivia.

We are grateful for all the support that was received in this emergency situation.





Cuipa Kahuaya Celebration of New Community Water, Bolivia

CONSES

WEFTA partner Julio Sanchez of CONSES, a Bolivian NGO, successfully completed an ecological bathroom project for 30 families residing in Puerto Villareal, an ex-urban suburb of Cochabamba.

The project involved the installation of 30 ecological bathrooms in ex-urban areas surrounding La Paz, addressing the critical need for appropriate sanitation solutions in homes lacking existing infrastructure or space for a pit latrine. With funding support from the Wheaton Franciscan Sisters, over 165 lives have been positively impacted with the installation of these ecological bathrooms. Julio's innovative ecological bathroom design is gaining recognition and demand within communities supported by Water For People.



POST-CONSTRUCTION FOLLOW UP

In addition to attending the Cuipa Kahuaya project inauguration during their site visit to Bolivia in March, Jason Gehrig and his son, Anthony, also delivered a Total Station to Suma Jayma. Jason procured this surveying equipment in Texas and hand-delivered it to the Suma Jayma team in Bolivia. During Jason and Anthony's site visit trip, they toured several communities with completed water projects as well as potential new project sites. Jason and Anthony also attended the CONSES ecological bathroom workshop, met with Water for People staff in Cochabamba, and engaged with members of the Caritas Diocese of El Alto.



EL SALVADOR

LAGUNA OLOMEGA, SAN MIGUEL

WEFTA continues to work with Paso Pacifico, a conservation organization, in the communities surrounding Lake Olomega. Together we are developing water and sanitation assessments for WASH interventions.

The WEFTA team visited these communities in October to gain on-the-ground knowledge of the overall WASH needs and community organization capabilities to tackle the WASH improvements planned for 2025.



SAN MIGUELITO, AHUACHAPAN

During their site visit to the communities surrounding Laguna Olomega in October, WEFTA volunteers Tim Wellman and Ryan Shields also visited the community of San Miguelito to assess the existing water system. This community is where Tim Wellman, WEFTA Executive Director, served as a Peace Corps Volunteer in the late 1990s.

WEFTA is working with the local water committee to develop a small-scale water system renovation that will serve 151 households, positively impacting over 600 lives. A portion of the original gravity flow water system was funded by WEFTA's sister organization, Waterlines, in 2001.





HONDURAS

LA IGUALA

WEFTA long-time engineer volunteer, Andrew Robertson, continues to make progress on multiple ongoing projects in La Iguala Centro, benefiting over 1,800 lives. These projects include bathroom finalization, transmission line surveying, and transmission line construction. Andrew traveled to Honduras in April and in August for post-construction site visits.

WEFTA in-country partners, Martir Cubas and Belarmino Miranda Suate, continue to provide construction oversight on water projects and technical assistance to water system operators in the service area around La Iguala and Llano Largo.

POLICARPO, ROATAN

WEFTA continues to provide technical assistance to the water committee of Policarpo. WEFTA partner Dr. Alice Neumann, who provides volunteer medical services to Clinica Esperanza in Policarpo, has continued to help support efforts to improve the water system in Policarpo. WEFTA volunteer, Andrew, supervised the installation of a new submersible pump in one of Policarpo's groundwater wells. These water system improvement efforts will positively impact over 600 lives.

WEFTA WASH volunteers will visit Policarpo in 2025 to assess the overall water system and community dynamic to identify feasible WASH improvement activities there.

MEXICO

MIGUEL HIDALGO, TIERRA Y LIBERTAD AND BENITO JUAREZ MIRAMAR, CHIAPAS

Long-time WEFTA volunteer, Ramón Lucero, in collaboration with our in-country partner Kees Grootenboer, produced a project proposal for the communities of Miguel Hidalgo, Tierra y Libertad and Benito Juárez Miramar for both water supply and sanitation. The proposed project includes \$40,500 for water improvements and over \$250,000 for sanitation improvements in the three communities. The overall project will impact over 3,000 lives.

This Multi-village Water System Improvement Project in rural Chiapas is still in need of funding.

HOSPITAL SAN CARLOS, CHIAPAS

In April, Ramón traveled to Chiapas and joined Kees to make a site visit to Hospital San Carlos in Altamarino. The Hospital was built in 1969 and serves the Indigenous communities living in and around the Central Highlands and Eastern Mountain regions of Chiapas. This nonprofit hospital is run by the Daughters of Charity of St. Vincent de Paul and serves approximately 20,000 people annually.

While there, Ramón and Kees met with Sor Jose to develop plans for repair and renovation of the existing WASH improvements along with plans for upgrading the WASH systems at the hospital. Increased security and safety concerns have restricted activities on this project since April.

Due to these same safety concerns and restrictions, Ramón and Kees were not able to visit with the communities of Miguel Hidalgo, Tierra y Libertad, and Benito Juárez Miramar during their visit to Chiapas in April. We hope to resume activities in the region in 2025.

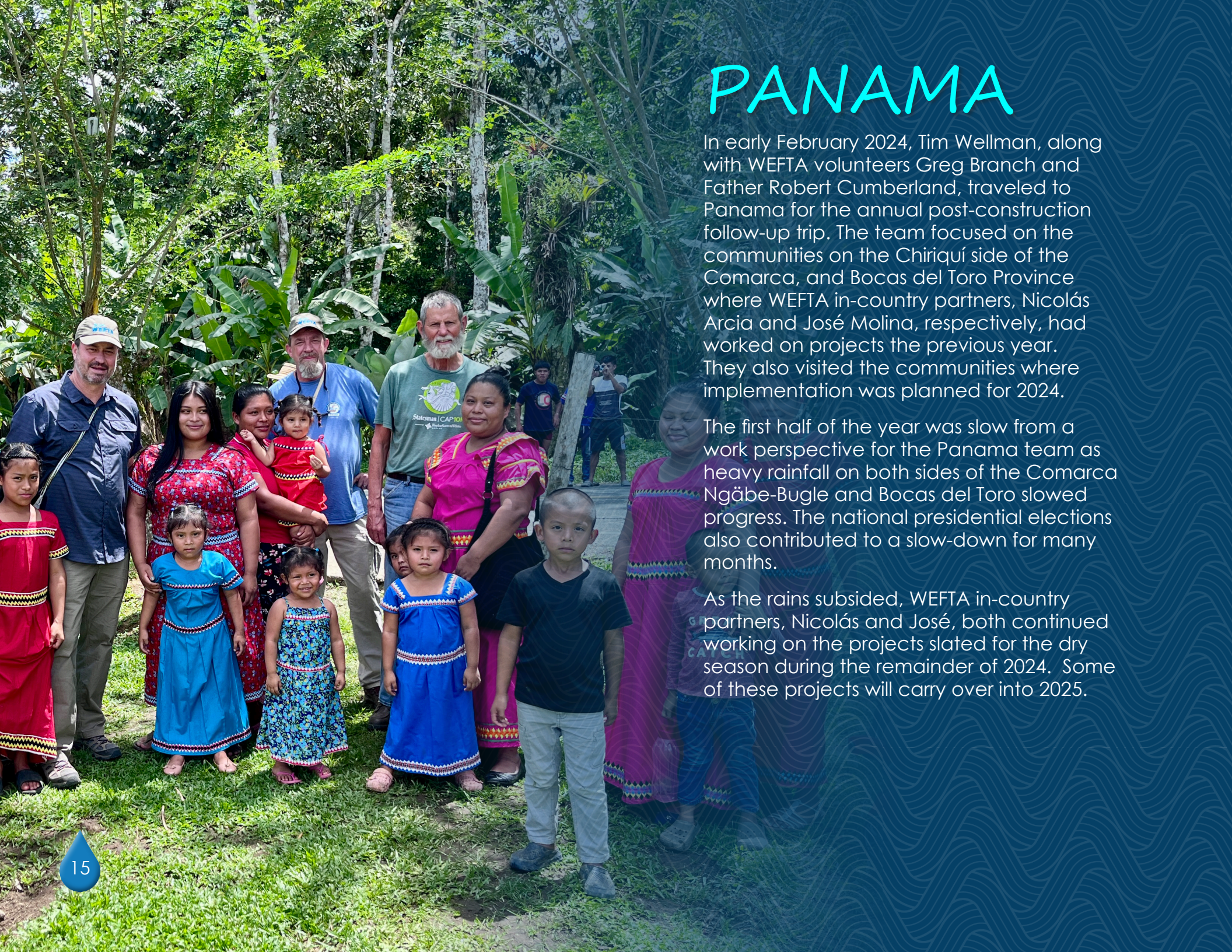


PANAMA

In early February 2024, Tim Wellman, along with WEFTA volunteers Greg Branch and Father Robert Cumberland, traveled to Panama for the annual post-construction follow-up trip. The team focused on the communities on the Chiriquí side of the Comarca, and Bocas del Toro Province where WEFTA in-country partners, Nicolás Arcia and José Molina, respectively, had worked on projects the previous year. They also visited the communities where implementation was planned for 2024.

The first half of the year was slow from a work perspective for the Panama team as heavy rainfall on both sides of the Comarca Ngäbe-Bugle and Bocas del Toro slowed progress. The national presidential elections also contributed to a slow-down for many months.

As the rains subsided, WEFTA in-country partners, Nicolás and José, both continued working on the projects slated for the dry season during the remainder of 2024. Some of these projects will carry over into 2025.



SAN MARTIN, BOCAS DEL TORO

WEFTA in-country partner, José Molina, completed the new water system project. WEFTA's circuit rider team will visit the community in February 2025 for the project inauguration. San Martin is a Ngäbe community that was displaced by the construction of a new dam on the Changuinola River. Panama's Ministry of Housing built the displaced residents' homes on purchased land outside of the Municipality of Valle Risco. San Martin was not provided with a water system. This project positively impacts over 290 people (50 homes).

LLANO MAJAGUA, COMARCA NGÄBE-BUGLE (Chiriqui)

Nicolás continued to work with the community of Llano Majagua to improve the water storage tank, rehabilitate the community water distribution system, and complete the project in progress from 2023. These renovations positively impacts over 230 lives.

ALTO ARENA, COMARCA NGÄBE-BUGLE (Chiriqui)

In collaboration with other communities in the area and the Ministry of Health, Nicolás is working with the community of Alto Arena to capture a new spring source, build a new transmission line, and renovate existing distribution lines.

In collaboration with other communities in the area and the Ministry of Health, these efforts will provide improved water delivery for over 350 people.





QUEBRADA PASTOR/CARRISAL, BOCAS DEL TORO

The community of Quebrada Pastor lies on the main road from Chiriquí Grande to Almirante, in the Bocas del Toro Province. Like many of the communities in Bocas del Toro, Quebrada Pastor has had a rich legacy working with Peace Corps. WEFTA has supported small scale water systems in the 'neighborhoods,' as well as providing support for the principal water system that serves the central part of Quebrada Pastor and the school.

José continues efforts in collaboration with the EWB NE Ohio Chapter to increase water supply in the community of Quebrada Pastor, including the school and neighborhood small water systems. In March, EWB and WEFTA volunteers Alex Litofsky, Amber Naylor, and Matt Kashuk visited with the community of Quebrada Pastor. This project positively impacts over 450 residents (70 households) and more than 1,200 students and staff of the school.

KWITE, COMARCA NGÄBE-BUGLE (Ñokribo)

Located on the banks of the Manantí River in the Ngäbe-Buglé Region, Kwite is a small community of over 300 residents. José will work to renovate the existing storage tank and improve distribution. Together, Nicolás and José will work on the renovation of the spring capture to improve source water flow.



ZAPOTE 1 & 2 , COMARCA NGÄBE-BUGLE (Chiriqui)

WEFTA and Waterlines have worked with the communities of Zapote 1 and Zapote 2 since 2003. In 2023, Nicolás and team reconstructed the main supply tank that serves both communities. In 2024, additional challenges with the water supply were reported. The community of Zapote is working with Nicolás to troubleshoot the water supply issues that prevent water filling the new water storage tank. This water system serves over 400 people.



VALLE RISCO BILINGUAL SCHOOL, BOCAS DEL TORO

The bilingual school in Valle Risco serves the majority of the population for education in grades K-12. Along with the school water committee, José is working to capture a new water source, build a new storage tank, and improve distribution within the Valle Risco school facility. This project will positively impact over 1,500 students, staff, and administration personnel.

CERRO BRUJO, BOCAS DEL TORO

Cerro Brujo is a coastal community on the Tierra Obscura peninsula of Bocas del Toro. Nicolás and José are working together to rehabilitate the water source for the community of Cerro Brujo and to increase water storage by building a new storage tank. This project will positively impact over 300 lives.



PERU

Through connections from WEFTA volunteer, Jason Gehrig, WEFTA staff and volunteers provided initial technical support for a new water project in the town of Iquitos, benefiting approximately 80 households (400 lives).

Water for People is also involved at the local level and is proposing to take on all of the project implementation. Whether or not WEFTA starts a new project, providing timely technical assistance to partners in the field falls under our mission.



BURKINA FASO

CLINIC NOTRE DAME DE ESPERANCE, NOUNA

The Clinic Notre Dame de Esperance WASH improvement project is almost complete. The clinic, run by the Daughters of Charity, is located in Nouna, approximately 80 km southeast of the Mali border and serves a catchment population of over 90,000 people. Due to the ongoing refugee crisis and terrorism concerns, our in-country partner, Adama Sawadogo, has made progress in small steps.

The project is bringing a new groundwater well, bathrooms (staff and patient), and handwashing stations to the clinic.

NOUNA REFUGEE WELLS AND BATHROOMS PROJECT, NOUNA

Through our work with the Sisters at the Clinic Notre Dame de Esperance, we learned of a very dire refugee situation in the town of Nouna.

Due to civil unrest and terrorist acts, tens of thousands of people are fleeing their homes in northern Burkina Faso and southern Mali. Many of them have entered refugee camps, others have taken up residence in the town of Nouna. WASH infrastructure in the town is already limited and unreliable. Many refugees have constructed rudimentary camps around Nouna.

Witnessing this expanding crisis and dire situation, a local Daughters of Charity sister in Burkina Faso suggested providing bathrooms and showers in a controlled environment on the Daughters of Charity compound to help serve the refugee population. With that, this project was born. In collaboration with Daughters of Charity International Project Services, WEFTA worked with our in-country partner, Adama Sawadogo, to facilitate this project.

In October, the construction of 4 bathrooms and 2 shower stations was completed. Drilling of a new groundwater well was also completed. The final phase for the elevated water storage tank, water supply points, solar well pump system and a backup generator is expected to be complete in early 2025.



CAMEROON

ST. THERESE OF THE CHILD JESUS HOSPITAL, MOUTOURWA

Located in Moutourwa, the Far North region of Cameroon, St. Therese Hospital serves over 5,000 people each year and currently lacks access to a sufficient supply of safe water to treat patients. The Hospital is run by the Daughters of Charity.

In collaboration with our in-country partner Dom Nwachukwu, and Dom's colleague, Bruno Nfor, an assessment was performed in late 2023 which identified the WASH resource improvements needed. The critical items identified included a new protected groundwater well, elevated storage, water distribution, community water points, and bathrooms for the healthcare facility patients and staff. The improvements will also include a solar pumping system.

KUEKA MEDICAL CENTER, FAMBOUN

Also run by the Daughters of Charity, Kueka Medical Center is located in the northwestern region of Cameroon in the town of Fouban. The Medical Center serves over 1,250 patients each month, with a catchment population of over 15,000 people. This healthcare facility and the surrounding community of Kueka are in dire need of access to safe water.

In collaboration with Dom, Bruno was able to safely mobilize to the facility in December of 2023 to perform an assessment of WASH needs during the same trip to St. Therese. The critical resources identified in need for Kueka Medical Center were the same as for St. Therese Hospital.

Both projects – Kueka Medical Center and St. Therese of the Child Jesus Hospital – were slated to be in motion after the rainy season in late 2024. They are expected to be complete in 2025 barring any challenges with mobilization due to violence and civil unrest.

GHANA

IMMACULATE CONCEPTION OF MARY HEALTH CENTER, KONGO LOGRE

Another Daughters of Charity-run healthcare facility, the Immaculate Conception of Mary Health Center is located in the community of Kongo-Logre. The Health Center serves a catchment population of over 16,000 people.

This WASH Improvement Project was completed in early 2023, and included a protected borehole, an elevated water storage tank, installed distribution lines, constructed of community tap stands, an incinerator, installed toilets and handwashing sinks, a new generator, and upgraded facility electrical and lighting.

During a scheduled post-construction follow-up in early 2024 by our in-country partner Ms. Fati Hassan, the need for staff training and minor repairs to the WASH infrastructure was identified. Fati supervised the renovation and repairs, and staff Operation & Maintenance training at the healthcare facility in September.

This action tells the tale of the critical need for post-construction follow-up and a budget to complete renovation and repairs and/or staff training for WASH management.



ETHIOPIA

WEST OMO ZONE (WOZ)

In collaboration with Village Health Partnership (VHP), WEFTA volunteer Scott McKitrick, and Tim Wellman worked on water supply development projects at Kuju Clinic, Siz Hospital, and Mizan Teaching Hospital (MTUTH). WEFTA's technical assistance to VHP is critical to ensure proper project design and engineering at these healthcare facilities (HCFs) for new water wells, storage tanks, and pipelines. Austin Quig-Hartman, a new WEFTA volunteer, is providing technical assistance for the solar component of these projects as they all have solar driven water wells.

In October, WEFTA volunteers Scott McKitrick, Katherine Yuhas, and Marty Howell, along with Dr. Migs Muldrow (VHP) and her team, traveled to Ethiopia to visit the clinics in the West Omo Zone (WOZ). Their visit provided further assessments on the WASH and CLINICAL survey tools. The team worked with the facilities engineering staff at the Mizan Hospital on WASH improvement for the facilities including the implementation of an Infection Prevention Program (IPC) using chlorine and staff training for IPC. These efforts are steps toward developing a chlorine production pilot program for the hospital and rural clinics.



DANKA CATHOLIC HOSPITAL, DEMBI DOLO

The Danka Clinic is located in the town of Dembi Dolo and serves a catchment population of over 98,000 people. The clinic is run by the Daughters of Charity.

WEFTA's in-country partner, Mr. Birassa Aliko, continues to provide technical support for this project. Birassa, a certified water technician, collaborated with local engineers and groundwater hydrologists to site a new water well for the clinic. Funding for this project was secured in June and the construction was slated to begin in September. Mobilization costs and well driller availability has pushed this project into early 2025.

ST. MARY'S COMPOUND, ADDIS ABABA

St. Mary's is a Daughters of Charity Compound and includes St. Mary's Provincial House, St. Mary's Laboratory and Clinic, and St. Mary's Catholic School. The Compound is located in the northern part of Addis Ababa.

As part of WEFTA's post construction follow-up program, our in-country partner, Tilahun Azagegn, made a visit to St. Mary's in September to evaluate the WASH improvements that were completed in 2020. His assessment identified minor repairs needed. Tilahun completed the necessary repairs on the water infrastructure inside the compound, trained the staff on operation and maintenance tasks, and renovated the groundwater well for improved production.

St. Mary's water supply provides daily access to a safe reliable water source for over 4,000 students, staff, and patients. It also positively impacts over 10,000 people from the communities and programs served by the laboratory and clinic.



KENYA

LOLKERINGET DISPENSARY, NANDI COUNTY

The community of Lolkeringet consists of over 150 households located in Nandi county, part of the rift valley province of Kenya. The community has experienced tremendous population growth due to the proximity to Eldoret, one of Kenya's fast-growing towns with higher learning and tertiary institutions.

Lolkeringet has outgrown the water system that has been in place. The healthcare facility has been relying on rain harvesting which poses many challenges during dry seasons. The maternity wing has not been able to operate without a reliable water source.

In collaboration with our in-country partner, David Kurgat, implementation of the WASH improvements for the HCF and expansion of the water system to the households in the system area, began in September. These improvements will extend WASH services to the school, church, and the community eliminating the need for women and children to spend hours collecting and fetching water. It will also enable the HCF maternity wing to operate and serve the needs of women in childbirth.

This WASH Improvement project is expected to be completed in early 2025 and will positively impact over 1,200 people.

As part of WEFTA's Circuit Riding and Post-construction Monitoring Program, David continues to perform assessments and project development for multiple WASH in HCF projects, originally developed by Waterlines, our sister organization.





MUNGAKHA WASH IMPROVEMENT PROJECT, KAKAMEGA COUNTY

Mungakha is located in rural western Kenya in Kakamega County. A malfunctioning well and pump deprived the community – which includes two schools, a church, a healthcare facility, and the community at large – of access to safe water, forcing them to rely on water from an unprotected spring and river.

In collaboration with our in-country partners, Safe Water and Sustainable Hygiene Initiative (SAWASHI), construction was completed in November. Improvements included a newly drilled borehole within the church premises equipped with a solar pump and elevated water storage to serve the HCF, schools, church, and community. Handwashing stations were constructed throughout the facilities. In addition, public toilets were constructed for patients, HCF staff, and the community. The inauguration of the project is planned for early 2025. This project positively impacts over 3,000 people.



NIGERIA

ROSALIE RENDU HOSPITAL, LAGO STATE

Run by the Daughters of Charity, Rosalie Rendu Hospital is located in Lagos State in southwest Nigeria. In May, our in-country partner, Dom Nwachukwu, visited the facility and performed a WASH assessment to identify the improvements needed.

WASH Improvements for Rosalie Rendu Hospital include new water wells, electrical and components for the well, elevated storage tanks, and renovation and repair of the existing distribution system.

This project is expected to be complete in mid-2025 and will positively impact over 10,000 people.

OSSIOMO REHABILITATION CENTER, EDO STATE

Serving a population of over 3,200 people, the Ossiomo Rehabilitation Center, also run by the Daughters of Charity, is located in the southern region of Nigeria in Edo State and is one of the few healthcare facilities that serve patients with Leprosy.

In May, Dom visited the facility during the same trip to Rosalie Rendu Hospital in Lagos State, to perform an assessment and identify the WASH needs, which include new water wells and elevated storage tanks.

Funding has been secured for these improvements. The project is expected to be underway in early 2025.



ST. MARY MAGDALENE'S HOSPITAL, TUNGAN GERO

St Mary Magdalene's Hospital is located in the village of Tungan Gero in the north-central region of Nigeria. The Hospital is run by the Daughters of Charity and in addition to the healthcare facility, the compound includes a school.

In collaboration with our in-country partner, Dom, an assessment was performed in 2023, and funding was secured in mid-2024 for critical WASH Improvements. This WASH in HCF project includes a new large water well that will supply water to the hospital and the primary school. It will also include a new elevated storage tank, distribution lines, handwashing stations, and bathrooms serving a catchment population of over 50,000 people in the region. This project is slated for early 2025.

ST. MARY'S PARISH, KATSINA ALA

In July, Dom's colleague, Professor Bruno Nfor, met with our local community liaison, Clement Bologo, in rural Nigeria and traveled to the villages of Ikurav Tiev and Kpanenge. An assessment of the groundwater conditions for a potential small-scale water system was performed. Currently, these communities around St. Mary's Catholic Church do not have access to safe reliable water, with water primarily being collected from the River Katsina Ala.

Dom and his team will work on the development of this water system improvement project to benefit over 1,200 lives in early 2025.



TANZANIA

LUNDU HEALTH CENTER, SONGEA REGION

The Lundu Parish Center is located in the Nyasa District of Tanzania, and consists of a church, the sisters' convent, the priests' compound, nursery and primary schools, and a dispensary providing healthcare services to over 5,000 people in the surrounding communities.

In collaboration with our in-country partners, Sanitation and Water Action (SAWA), work began on the WASH improvements of the Lundu HCF in early 2024. From our work with the Mpapa Hospital in recent years, we learned of 4 satellite HCFs in need of WASH improvements in the Mbinga Diocese, Lundu being one of them, and the first of the 4 additional projects to be implemented.

The critical improvements at the Lundu Center included constructing: a new spring source gravity flow water system; new and rehabilitated toilets at the priests' house, the church, and schools; ceramic handwashing stations at multiple locations including all points of care; a raised 20 cubic meter water tank; an incinerator, an ash pit; and a placenta pit. Also needed were general HCF improvements, and rehabilitation of the Sisters' house.



The Lundu Health Center project was completed ahead of schedule and was handed over to the community with celebration in early December 2024. The successful completion of this project provides access to clean water and adequate sanitation, positively impacting over 5,000 lives per year.

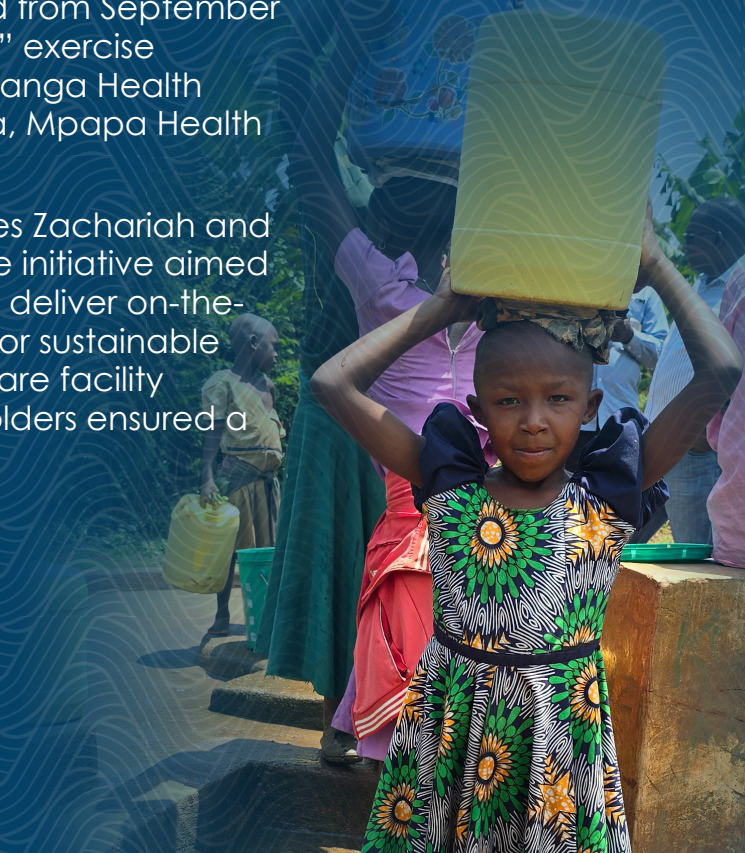
The beginning phases for Lituhi Parish Center, the next of the 3 remaining Mbinga satellite HCFs in the Songea Region, are slated for early 2025.



WASH IN HCF CIRCUIT RIDING PROGRAM - TANZANIA

Together, WEFTA and SAWA have advanced water, sanitation, and hygiene (WASH) efforts in Tanzania through a focused initiative conducted from September 15 to October 7, 2024. This “circuit rider” exercise targeted four healthcare facilities: Masanga Health Centre, St. John’s Hospital at Lugarawa, Mpapa Health Centre, and Lundu Dispensary.

Led by SAWA Executive Director Charles Zachariah and Board Member Godfrey Mpangala, the initiative aimed to monitor existing WASH infrastructure, deliver on-the-job training, and identify future needs for sustainable operations. Collaboration with healthcare facility management and community stakeholders ensured a comprehensive approach.



Data was collected through surveys, field observations, interviews, and mapping tools, accompanied by GPS and photographic documentation. These efforts highlight WEFTA and SAWA's ongoing commitment to improving WASH assets for essential healthcare services in the region.

It is critical to return to completed WASH projects on a scheduled basis to perform post-construction follow-up, provide HCF staff education and training on operation & maintenance, in addition to identifying renovation and repairs needed. This support helps ensure long-term sustainability of the projects.



OTHER ACTIVITIES

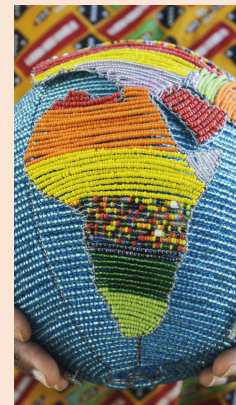
NGO DEVELOPMENT

In 2024, Tim Wellman continued to work with two engineering students at the Technological University of Panama on the development of a WASH NGO based in Panama to help fill the need for circuit riding, operation, maintenance, renovation and repair, in addition to water committee training, and government advocacy for WASH improvements in the Comarca Ngäbe-Bugle. During the 2024 Panama site-visit in February, Tim along with WEFTA volunteer Greg Branch, visited with the students and university officials to promote the concept. The new NGO, Araguas, is slated to be considered for official NGO status in early 2025.

With a new NGO in Panama dedicated to WASH access for rural Indigenous communities, WEFTA will be better positioned to continue its WASH work.

WEFTA / VHP SAFE CLINIC TOOLKIT

WEFTA and VHP together continue to work on the Safe Clinic Toolkit to promote timely and effective WASH and CLINICAL interventions at the WOZ clinics in Ethiopia. By completing WASH and CLINICAL assessments in the 10 HCFs under the VHP umbrella project, stakeholders are able to track clinic status and work to prioritize improvements, training, operation and maintenance, and education.



Introduction to the SafeClinicToolkit

West Omo Zone, Ethiopia

Village Health Partnership
Water Engineers for the Americas & Africa
2023

PARTNERSHIP DEVELOPMENT



FUNDING PARTNERS/SUPPORTERS



Wheaton Franciscan Sisters


WALLACE GENETIC FOUNDATION

BOLDER[®]
INSURANCE
PERSONAL • BUSINESS • PRIVATE CLIENT



THE LOYOLA FOUNDATION

Spirit ^{OF} Christ
CATHOLIC COMMUNITY

Rotary  Rotary Club of University Hills (Denver)

STRATEGIC PARTNERS



Village Health Partnership
safer motherhood in rural Ethiopia



PASO  PACÍFICO



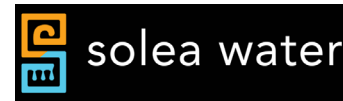
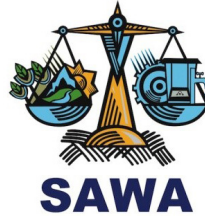
COVA SAFE WATER SOLUTIONS

TECHNICAL ASSISTANCE



Michigan Technological University

IN-COUNTRY PARTNER ORGANIZATIONS



INDEPENDENT IN-COUNTRY PARTNERS

Dom Nwachukwu (Nigeria/Cameroon)

Tilahun Azagegn (Ethiopia)

Adama Sawadogo (Burkina Faso)

Birassa Aliko (Ethiopia)

Fati Alhassan (Ghana)

David Kurgat (Kenya)

José Molina (Panama)

Nicolás Arcia (Panama)

Martir Cubas (Honduras)

Belarmino Miranda Suate (Honduras)

We are grateful for all of our supporters!

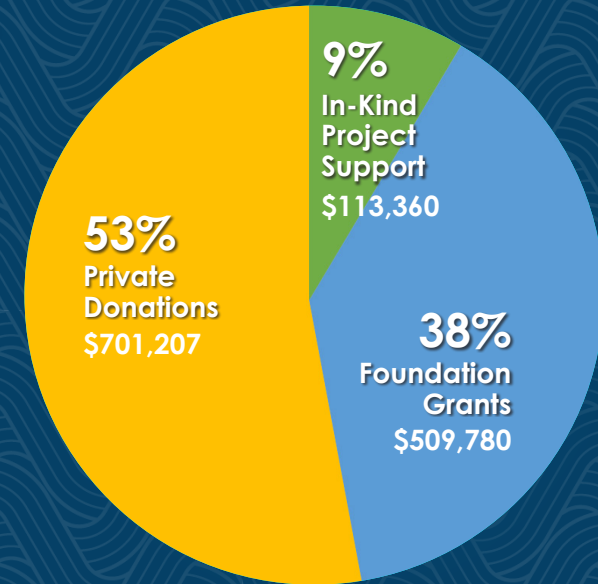
The work we do would not be possible without the continued collaboration of our strategic WASH partners, the on-the-ground support of our in-country partners, the amazing generosity of our donors, and the dedicated commitment of our volunteers!

OUR COMMITMENT

WEFTA is dedicated to the development of reliable and sustainable water and sanitation systems that not only serve the immediate needs of the communities we partner with but also empower beneficiaries to manage and maintain these systems effectively. By fostering local ownership and providing capacity-building support, WEFTA ensures the longevity and impact of these critical resources.

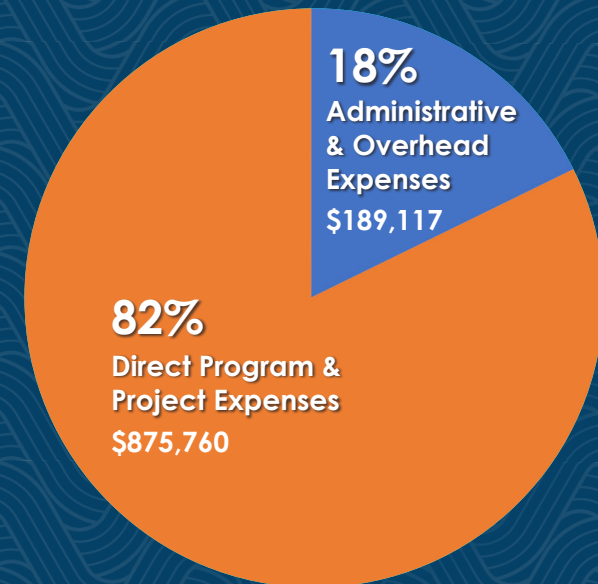
Our commitment extends to improving WASH resources in healthcare facilities, addressing one of the most urgent global health challenges. Through collaboration with donors, strategic partners, and volunteers, WEFTA continues to work toward equitable access to water and sanitation, in parallel with the United Nations Sustainable Development Goal #6.

Looking ahead to 2025, WEFTA is preparing to launch new projects and undertake renovations of existing systems in many of the countries we have served for over two decades. In addition, we are exploring opportunities to provide technical assistance in new regions, further expanding our reach and impact. These initiatives build on our mission to bring sustainable WASH solutions to underserved communities worldwide, ensuring a healthier and more resilient future.



2024 OPERATING REVENUE

\$1,324,347



2024 OPERATING EXPENSES

\$1,064,877





Together, we have directly impacted* over **154,000** lives in 2024, and benefited over **2.8 million** people in the catchment* areas of our healthcare facility WASH improvement projects!



wefta.net

Thank you!

*The **direct impact** of community water projects refers to the immediate benefits, such as improved access to clean water and sanitation for the population directly served. The **catchment population impact** reflects broader, indirect effects on the health and well-being of beneficiary populations served by healthcare facilities (HCFs), including reduced disease prevalence, increased access to water and sanitation improvements in healthcare facilities, and overall improved public health outcomes.

Making connections. Empowering communities. Improving lives.

WATER ENGINEERS FOR THE AMERICAS & AFRICA

1751 Calle Medico, Suite P • Santa Fe, New Mexico 87505



WEFTA

wefta.net



LINKS TO MORE WEFTA ACTIVITIES & ARTICLES

WEFTA NEWS & HAPPENINGS

WEFTA PRIORITY PROJECTS & PROGRAMS

ENGINEERED FOR CONSUMPTION - NPCA WORLDVIEW/Winter 2024 Edition

THE RIPPLE EFFECT OF WASH IN CATHOLIC HEALTH CARE

